

Li-Tb (Lithium-Terbium)

H. Okamoto

The Li-Tb phase diagram was unknown in [Massalski2]. Figure 1 shows the Li-Tb phase diagram constructed based on a schematic phase diagram and a table of invariant reaction temperatures and compositions given in [1998Gan]. Table 1 shows Li-Tb crystal structure data.

Reference

1998Gan: N.N. Ganiev, Kh.M. Nazarov, and M.D. Badalov, Interaction of Lithium with Rare-earth Metals, *Izv. Ross. Akad. Nauk, Metall.*, 1998, (6), p 109-112, in Russian; TR: *Russ. Metall.*, 1998, (6), p 132-136

Table 1 Li-Tb crystal structure data

Phase	Composition, at.% Tb	Pearson symbol	Space group	Strukturbericht designation	Prototype
(βLi)	0	<i>cI2</i>	<i>Im$\bar{3}m$</i>	<i>A2</i>	W
(βTb)	100	<i>cI2</i>	<i>Im$\bar{3}m$</i>	<i>A2</i>	W
(αTb)	100	<i>hP2</i>	<i>P6$_3$/mmc</i>	<i>A3</i>	Mg

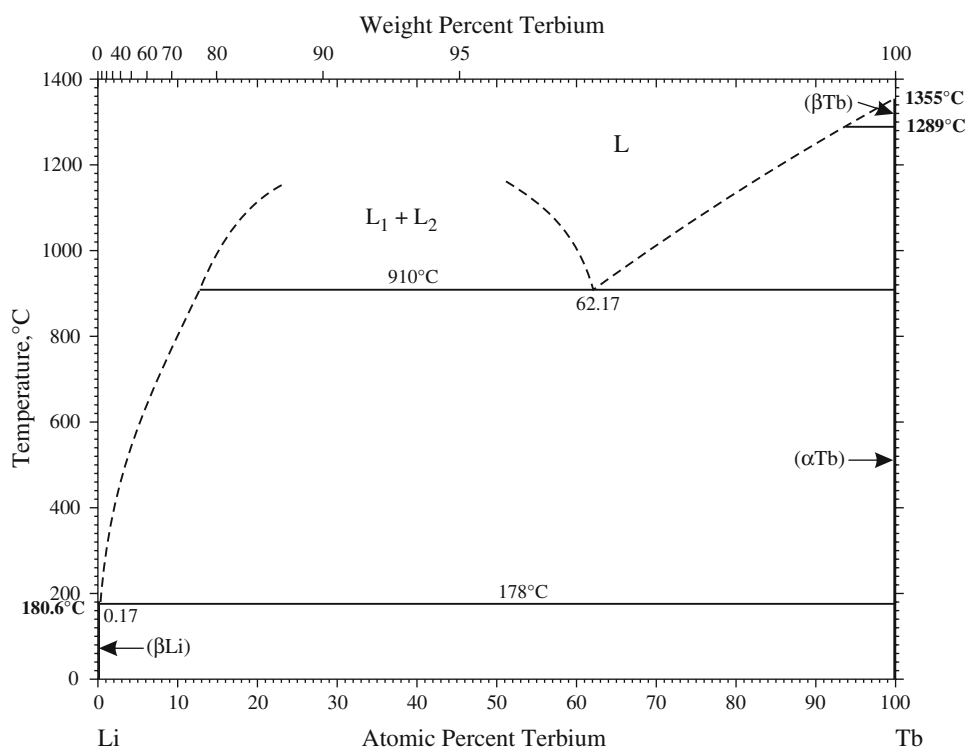


Fig. 1 Li-Tb phase diagram